



Installation Guide

KEF USB driver for legacy Windows versions

LSX II LT

Last updated: 20 December 2023

Table of Contents

1 Introduction	2
1.1 Background	2
2 How to install the KEF Audio USB driver	2
2.1 Preparation	2
2.2 Install the USB driver	2



1 Introduction

1.1 Background

Microsoft has officially stopped support for some legacy Windows versions. To play USB audio to the LSX II LT on these Windows versions, you need to install the KEF Audio USB driver.

- Windows 10 (version 1703 or lower)
- Windows 8
- Windows 7

Please note that support of the driver on these legacy Windows versions is limited. You are always recommended to update your PC to the latest Windows version.

2 How to install the KEF Audio USB driver

2.1 Preparation

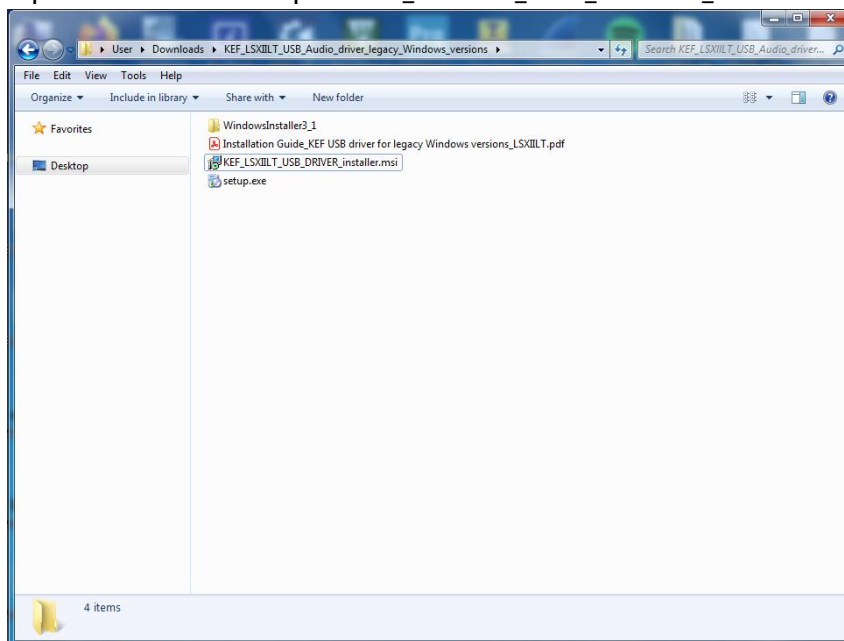
You will need the following:

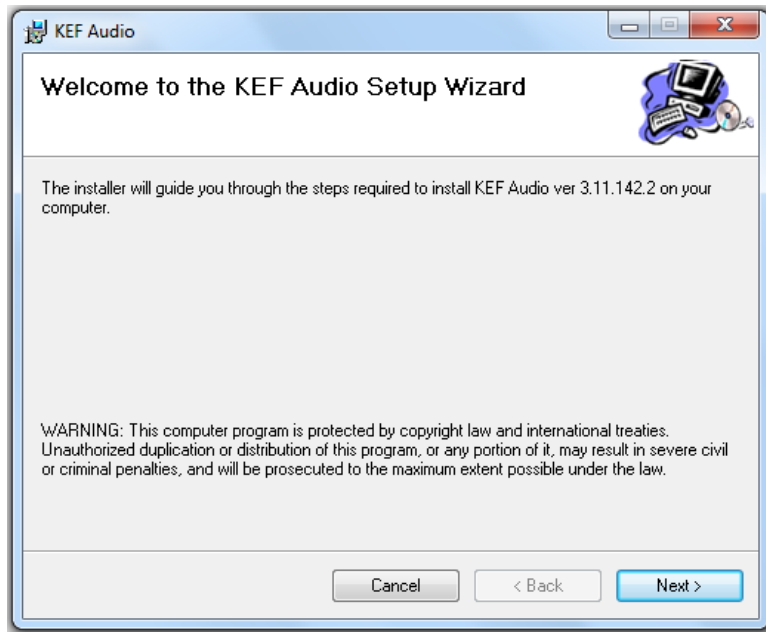
1. KEF Audio USB driver installer
2. USB-C cable that supports data transfer

Connect the USB-C cable from your PC to the USB-C port of the speaker.

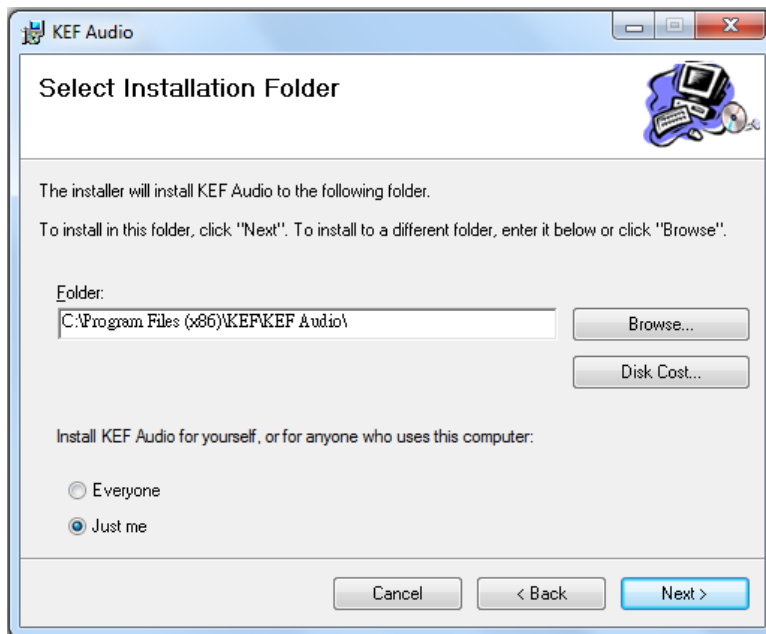
2.2 Install the USB driver

1. Unzip the file (KEF_LSXIILT_USB_Audio_driver_legacy_Windows_versions)
2. Open the folder and open KEF_LSXIILT_USB_DRIVER_installer.msi

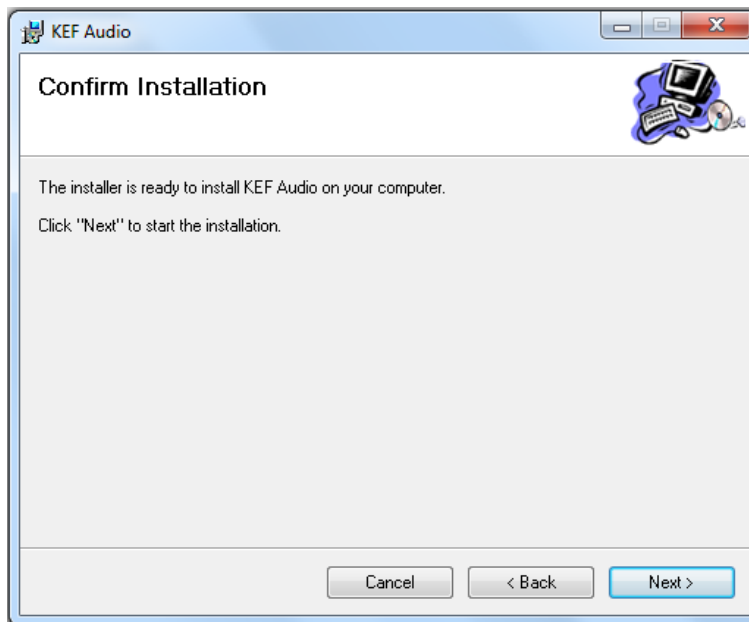




3. Follow the instruction and click 'Next'



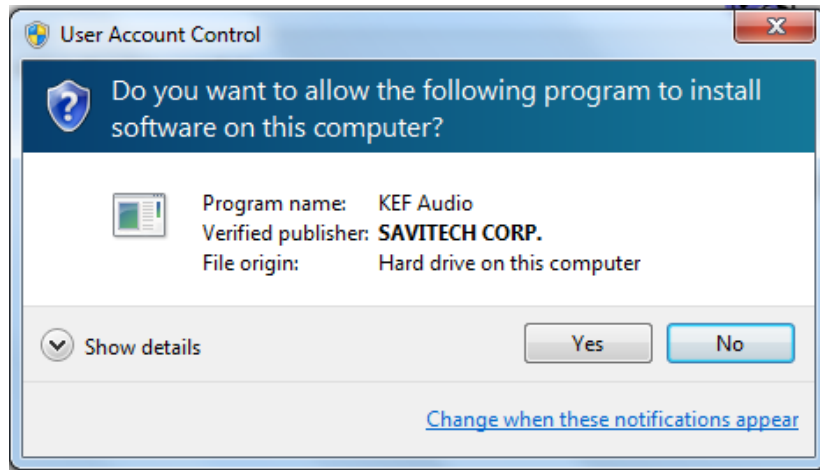
4. Click **'Next'** and start the installation



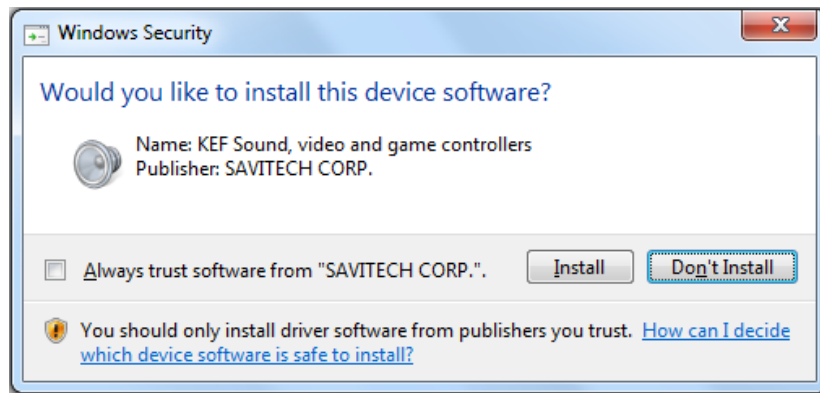
5. KEF USB driver is installing



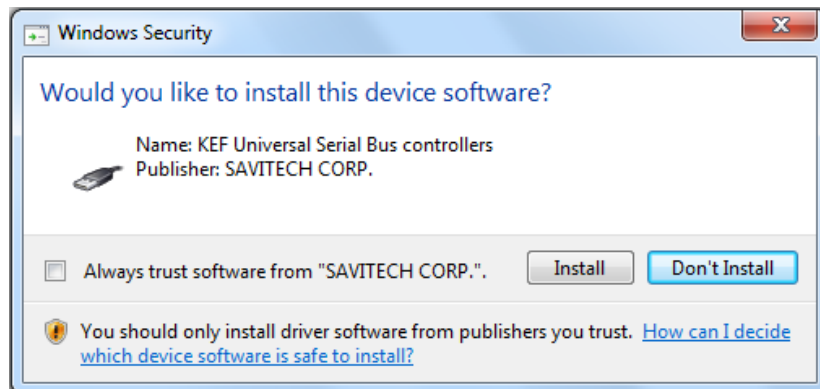
- Click "Yes" to allow the installation



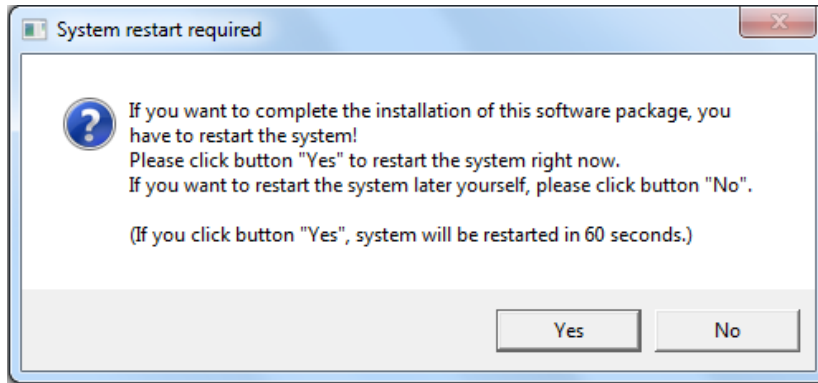
- Click 'Install' to continue the installation



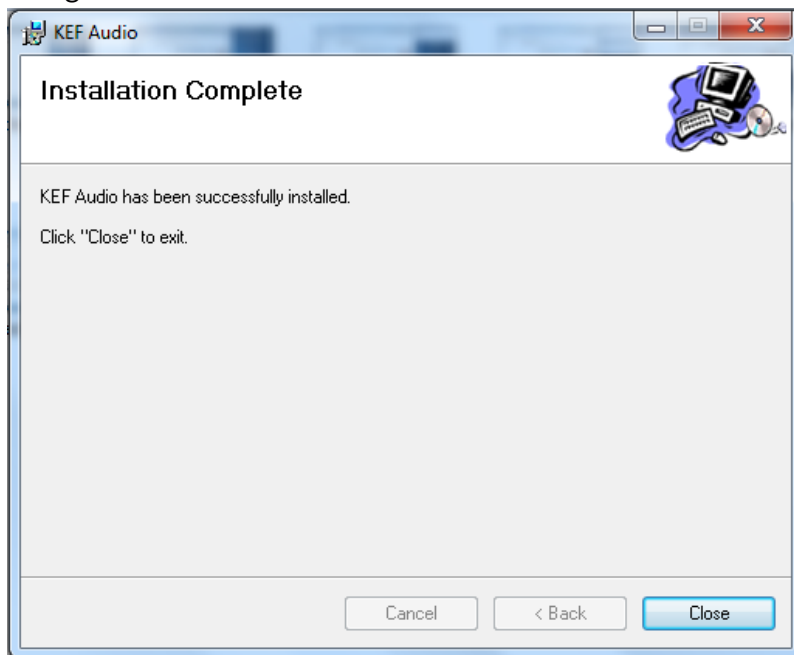
- Click 'Install' to continue the installation



9. To complete the installation, please click **'Yes'** and restart the system



10. Installation has now completed. Click **'Close'** to exit the installer. Your PC is now able to recognize LSX II LT as an audio device.



11. You can now select the LSX II LT as a playback device.

