



SOUNDBAR SERIES



Perfecting Perfection

Today's sleek flat panel televisions demand an audio solution that not only complements their stylish good looks but also faithfully reproduces the detailed high resolution sound conveyed by your favorite movie or series. Allow us to introduce you to the KEF Soundbar Series - a perfect combination of incredible audio performance and stylish good looks.

Delivering on the promise of KEF's legendary sound quality and rock-solid sonic imaging, KEF Soundbars produce their impressive soundstage from a single aluminium enclosure with a performance that rivals three discrete loudspeakers.

Depending on your needs, KEF offers you both a three-channel sound experience in the HTF8003 and HTF7003, as well as a single center channel configuration in the HTC8001 and HTC7001.

Regardless of their use, you'll be even more astonished by their sleek industrial design after you experience the sound; Subtle nuances you've never noticed before are now powerfully crisp and clear in your favorite soundtrack, episode and movie.

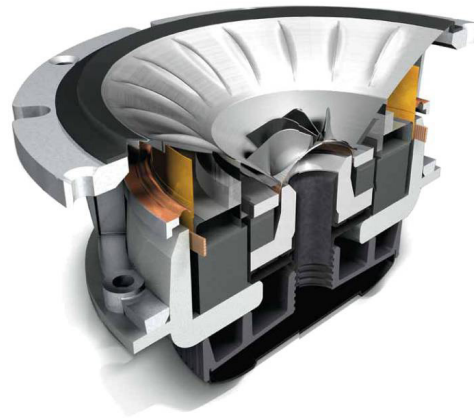
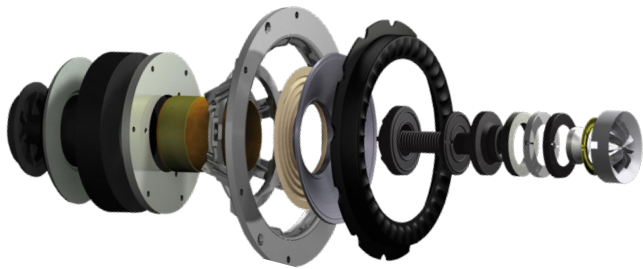


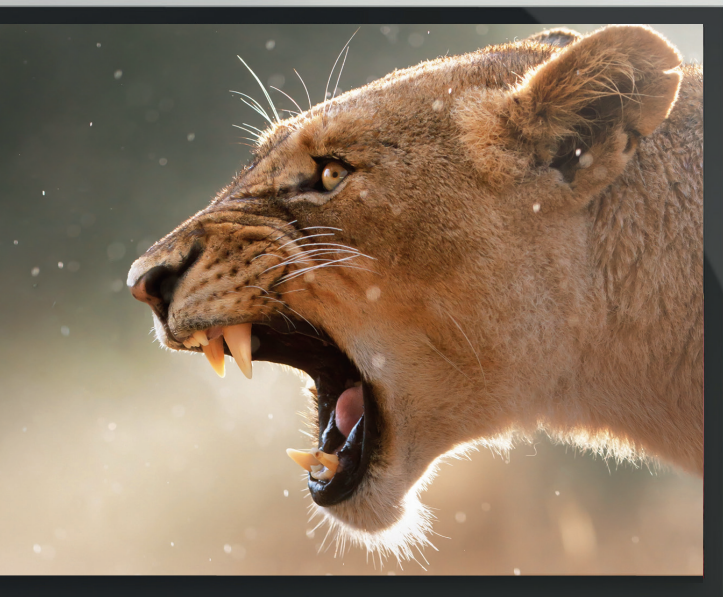
KEF Uni-Q Technology

Beautiful soundstage regardless of where you're seated

KEF's unique speaker driver technology is aptly named Uni-Q - Regardless of your room configuration and where you and your guests are seated, the KEF Uni-Q driver disperses sound over a more wide and even plane so that everyone can experience the same level of sonic detail and precision. All you need to do is place the soundbar and let our engineering work its magic!

KEF Engineering has placed the tweeter in the acoustic center of the bass/midrange driver creating a single focused audio source that disperses sound evenly throughout the room. Its similar to how we speak: All high, mid and low frequencies come from one place, so having it played back to us in the same manner results in a more realistic and accurate sound experience.





HTF8003

Perfect for a flat panel TV 42in. and larger

The level of audio engineering included in the KEF Soundbar Series is second-to-no-one. The HTF8003 consists of the three channels comprising a remarkable three-way speaker system containing the following: a KEF Uni-Q driver with a 75mm mid-bass driver and 15mm HF, a 75mm woofer and a 75mm ABR for extended bass output. Multiply that by three and you have one of the most powerful audio configurations available in a Soundbar. Simply put, we've made sure to out-do ourselves.







HTF7003

Perfect for a flat panel TV 32in. and larger

This gorgeous sleek performer is perfect for smaller-size televisions but don't let that fool you - its sonic performance far surpasses its small footprint. Each of the three channels contains two 50mm woofers and a 19mm HF driver, and when placed inside this extruded aluminium enclosure the sound is immense and impressive.



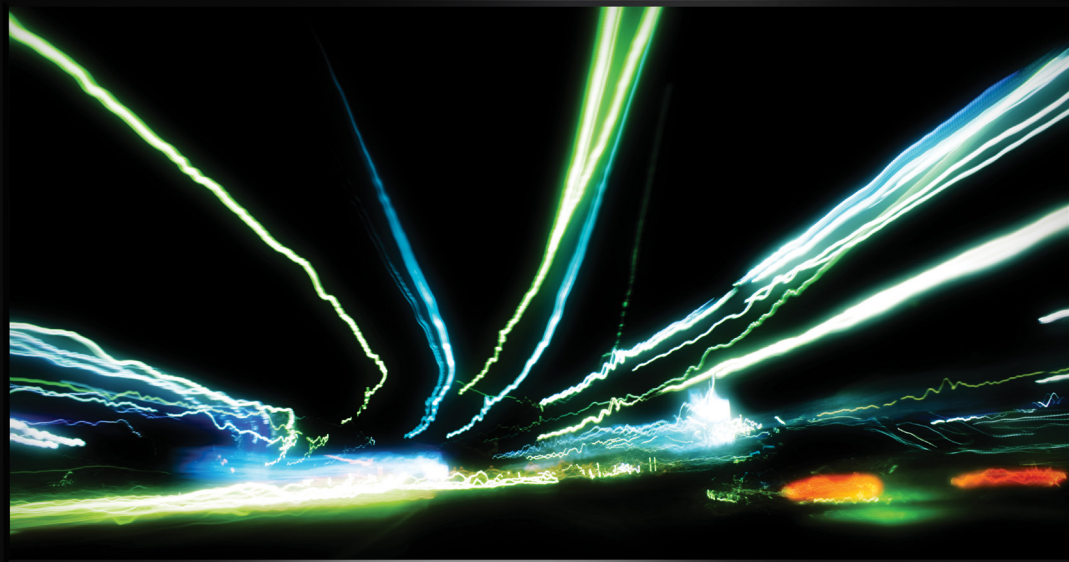
HTC800I and HTC700I

The center channel speaker of your dreams

The center channel speaker is the most important speaker in a home theater setup, bar none. Most of the dialogue from your favorite series and movie are coded to play through the center channel speaker. Having a dedicated center speaker can also alleviate volume fluctuations experienced on cable television where the commercials play extremely loud, and the television show plays not loud enough. If this is your experience, a KEF Soundbar in a center channel configuration will rock your world.

The HTC800I & HTC700I includes the exact audio technology as that of the HTF8003 & HTF7003 respectfully, but with the addition of a wiring harness that hooks in to each of the three channels on the rear with ease, each playing the same channel frequency. The result is a powerful center speaker with gorgeous styling that can be mounted on the wall or on a credenza depending on your tastes.





Accessories

WALL MOUNT BRACKETS

KEF Soundbars come supplied with both a wall mount bracket and a table stand which makes them an elegant partner to any television setup. Installation of the wall mount bracket is easy as one, two... you're done.

REAR CHANNELS

KEF offers a wide selection of rear channel speakers to complete your home theater, be it a speaker that mounts in your wall or ceiling (KEF Custom Installation Series) or a floorstanding / bookshelf model. All KEF speakers are timbre matched to compliment each other should you choose to mix and match to your tastes.



SUBWOOFERS

KEF's handsome subwoofer offering is also available for those who are ready to rumble. The KEF KUBE Subwoofer series with iBX offers three models, each one more powerful than the next, and the T2 subwoofer which not only offers extreme performance in a small easy-to-tuck-away footprint, but is also available in both a black and white finish.



T2 SUBWOOFER



KUBE SUBWOOFER

Specifications

MODEL	HTF7003	HTF8003	HTC7001	HTC8001
DESIGN	Two-way closed-box	Three-way bass reflex	Two-way closed-box	Three-way bass reflex
DRIVE UNITS	1.9mm (0.75in) AI HF 2x50mm (2in) LF unit per channel	1x75mm(3in) Uni-Q with 15mm (0.6in) AI HF 1x75mm (3in) LF 1X75mm(3in) ABR per channel	3x1.9mm (0.75in) AI HF 6x50mm (2in) LF unit	3x75mm(3in) Uni-Q with 15mm (0.6in) AI HF 3x75mm (3in) LF 3x75mm(3in) ABR
SENSITIVITY (2.83V/1m)	85dB	87dB	87dB	89dB
FREQUENCY RESPONSE (+/-3dB)	120Hz - 22kHz	70Hz - 22kHz	120Hz - 22kHz	70Hz - 22kHz
MAGNETIC SHIELDING	Yes	Yes	Yes	Yes
IMPEDANCE	8Ω	8Ω	6Ω	6Ω
INTERNAL VOLUME	2litres	4.6litres	2litres	4.6litres
RECOMMENDED AMPLIFIER	100W	100W	100W	100W
WEIGHT	2.1kg (4.6lbs)	6KG(13.2lbs)	2.1kg (4.6lbs)	6KG(13.2lbs)
DIMENSIONS (H x W x D)	81 x 785 x 61mm (3.1 x 30.9 x 2.4 in)	121 x 962 x 81mm (4.7 x 37.8 x 3.1in)	81 x 785 x 61mm (3.1 x 30.9 x 2.4 in)	121 x 962 x 81mm (4.7 x 37.8 x 3.1in)
FINISHES	High gloss black	High gloss black	High gloss black	High gloss black
MAX SPL	106dB	106dB	106dB	106dB
CROSSOVER FREQUENCY	2.8KhZ	2.8kHz	2.8KhZ	2.8kHz
INCLUDED ACCESSORIES	Wall Bracket, Foot Stand	Wall Bracket, Foot Stand	Wiring Harness, Wall Bracket, Foot Stand	Wiring Harness, Wall Bracket, Foot Stand



The Search for True Sound

KEF, one of the originators of the British hi-fi sound, was founded in 1961 by Raymond Cooke OBE (1925 - 1995). KEF was initially headquartered in a Nissen hut on the premises of Kent Engineering & Foundry, from which KEF derived its name. Cooke, an ex-BBC electrical engineer, was keen to experiment with new materials and technologies in order to create products with superior acoustic quality that could reproduce recordings as natural as the original performance. Made by music lovers from the very beginning, the pioneering inventiveness of KEF loudspeakers was undeniable, and audiophiles around the world have revered KEF for its innovative, high-performance loudspeakers.

Now in its sixth decade, KEF develops world-class products with its R&D and Engineering still based in Maidstone, Kent. Scientific innovation at KEF continues to underwrite its reputation as the audiophile's ultimate loudspeaker manufacturer.